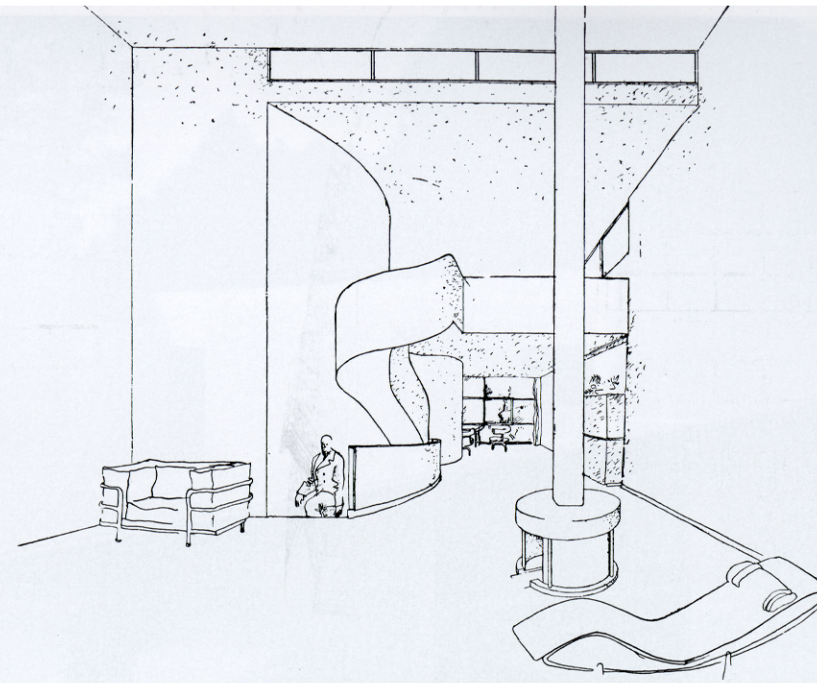
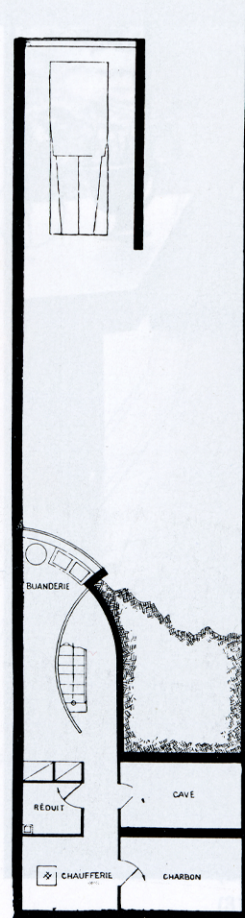


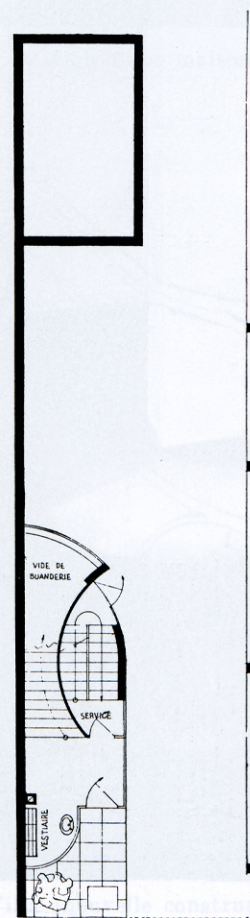
Vue du jardin (sud)



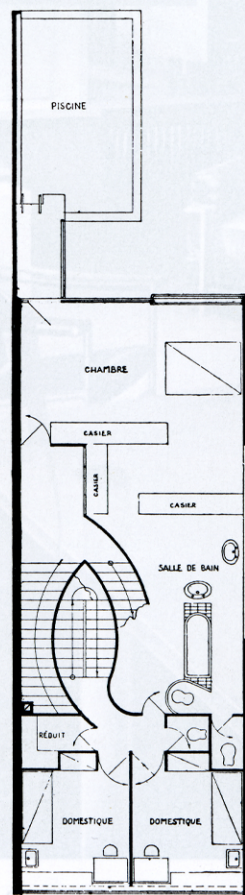
Living-room et au fond la salle à manger



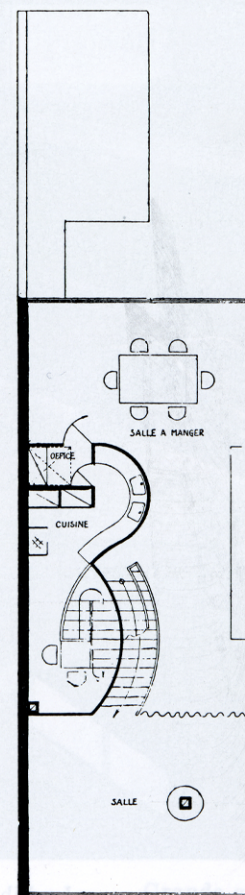
Sous-sol



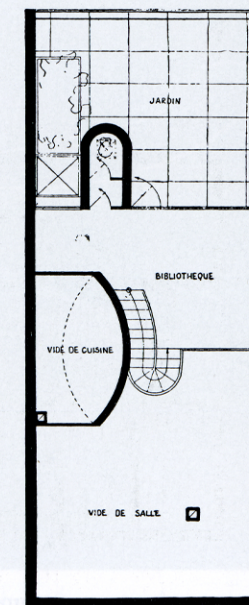
Rez-de-chaussée



1er étage



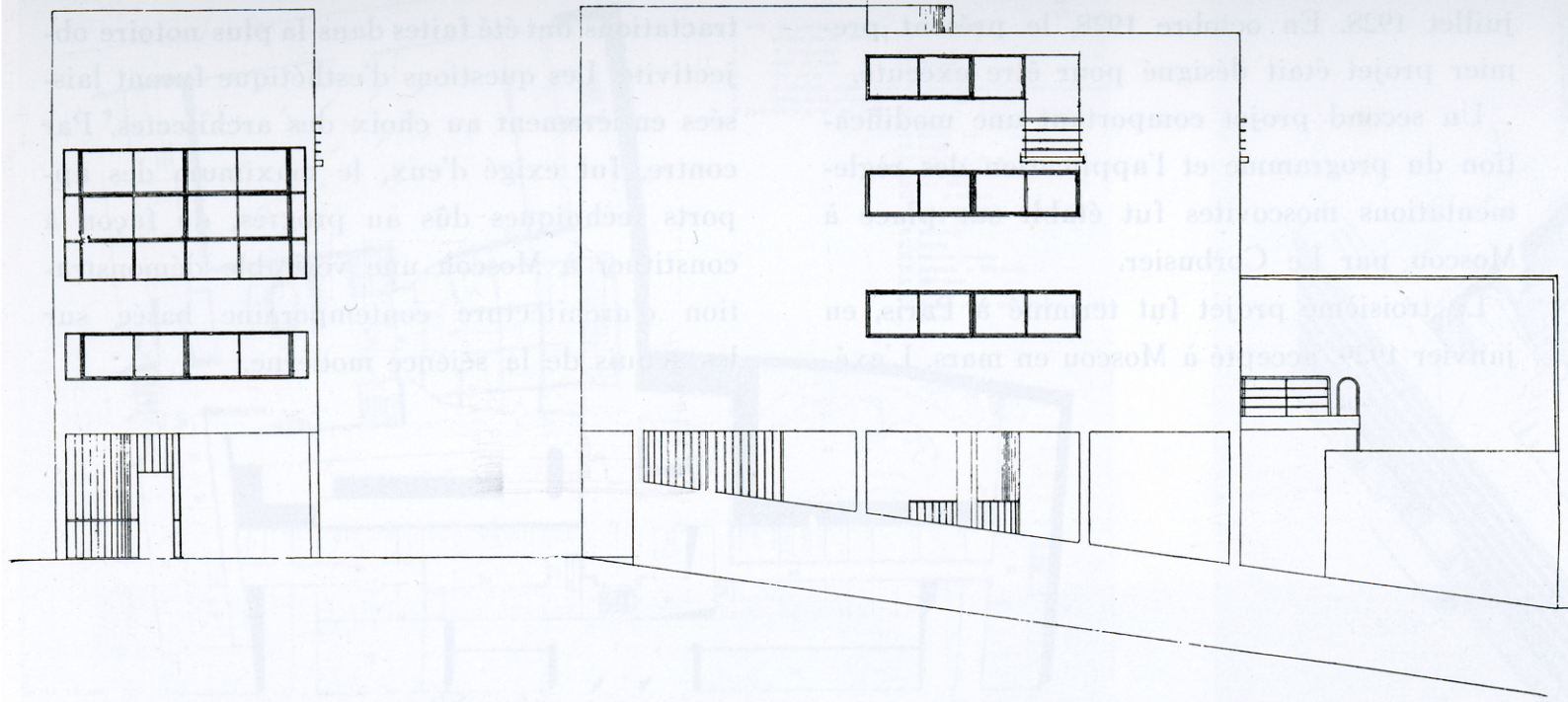
2me étage



Toit

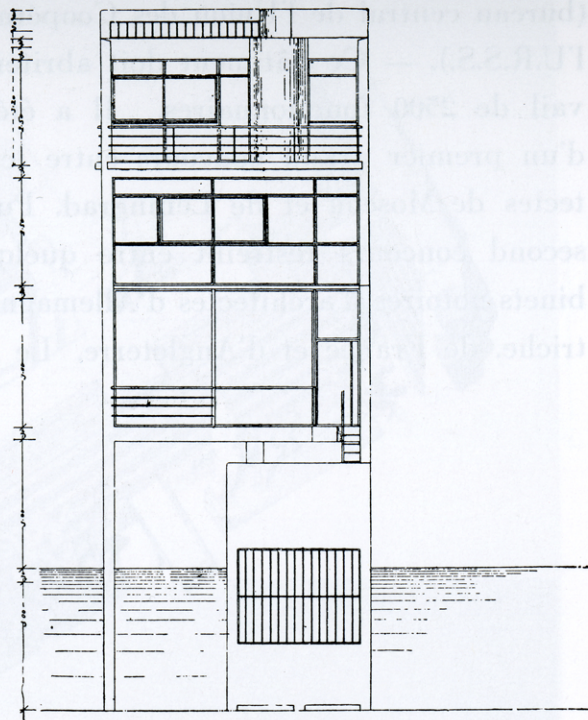
5m 1m

Schaal 1:200
papierformaat A3

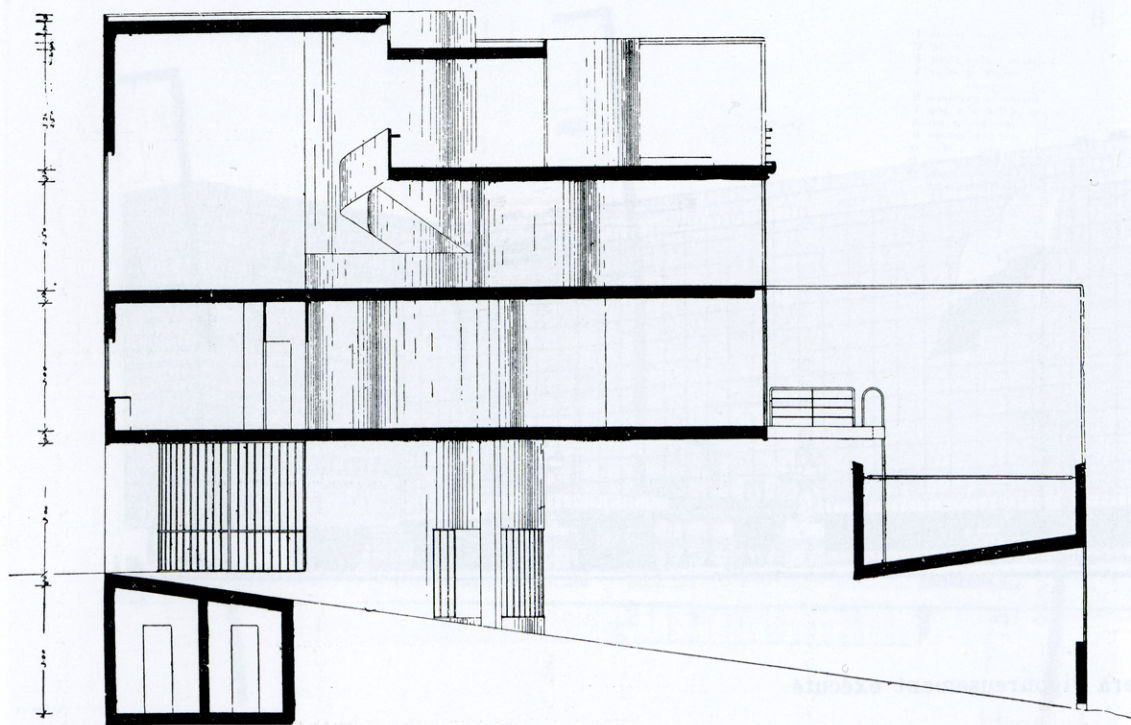


Façade sur la rue

Façade ouest

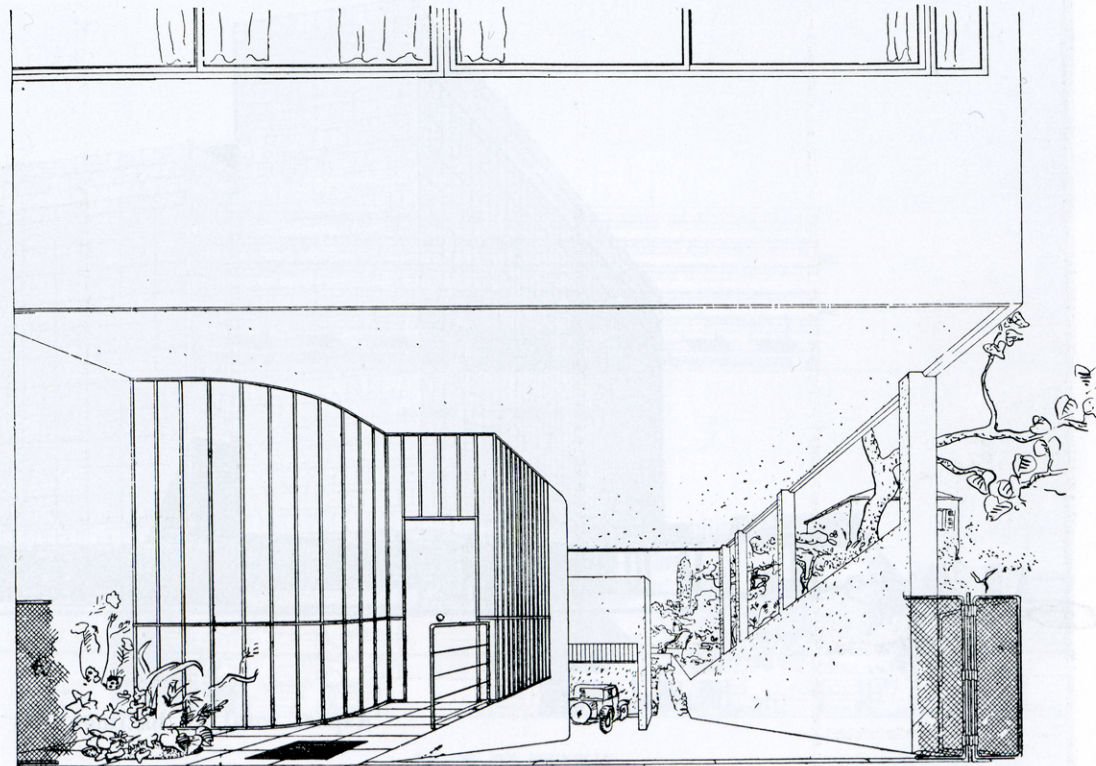


Façade sur le jardin



Coupe longitudinale

Piscine et en dessous, le garage



L'entrée et la rampe au garage